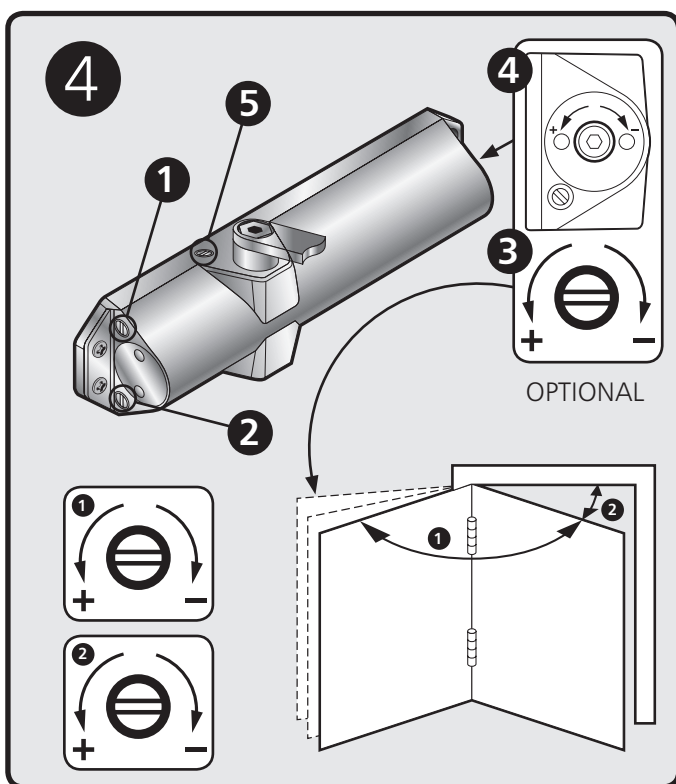
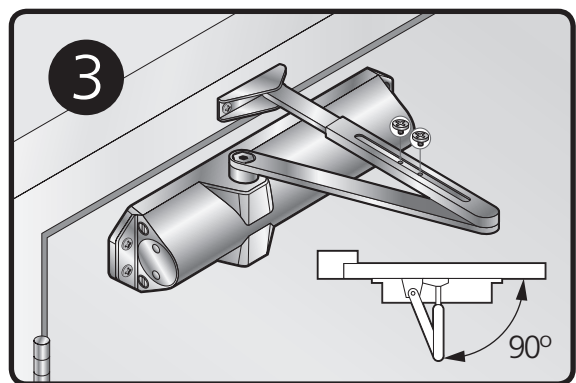
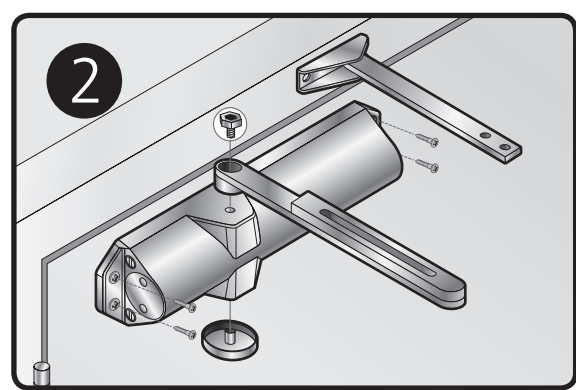
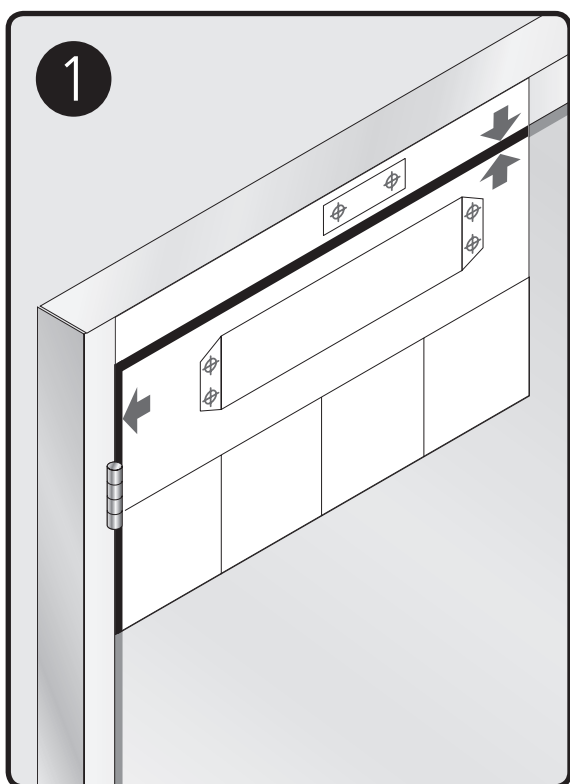
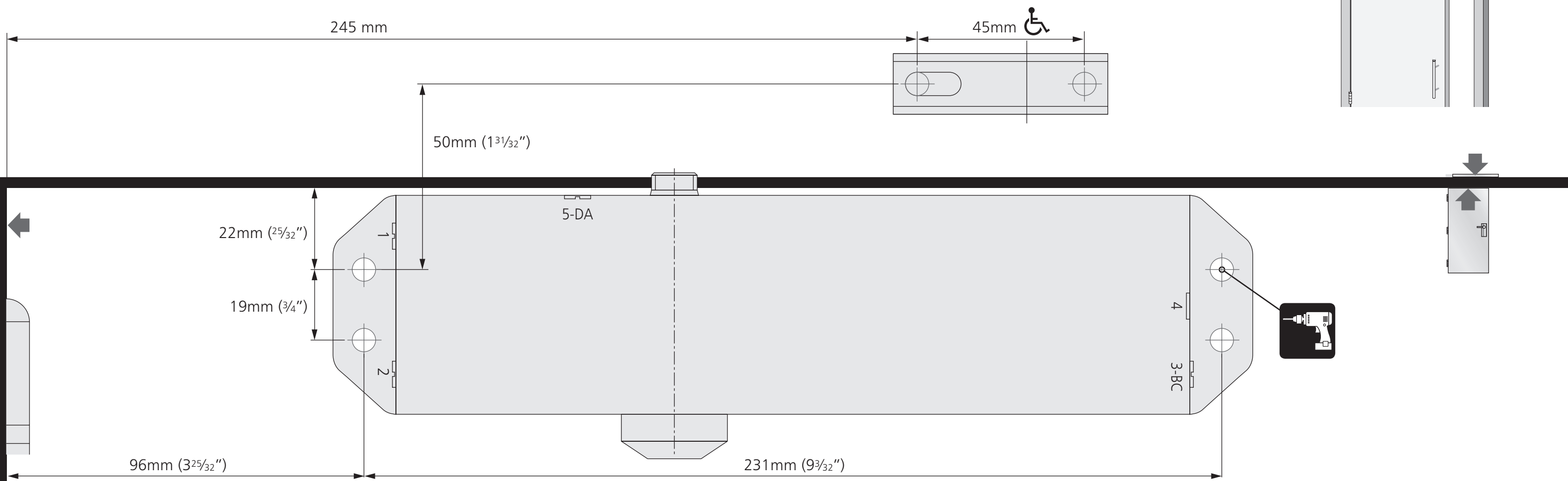


10/02/21 **CE** **UK CA** Pull Side Fitting  
**Code: S-20**

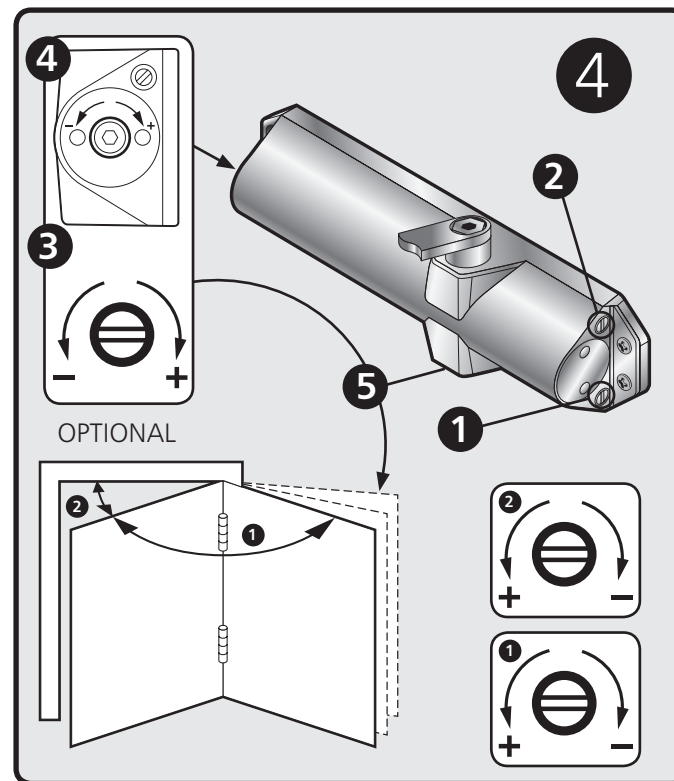
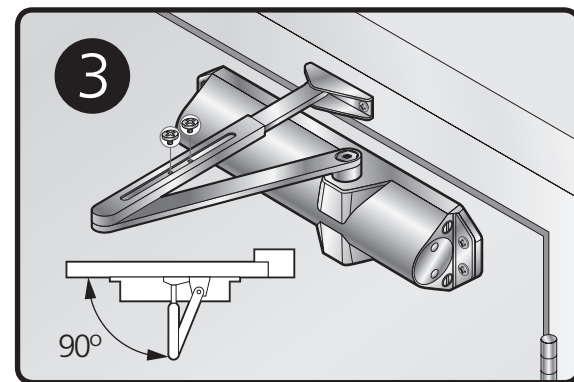
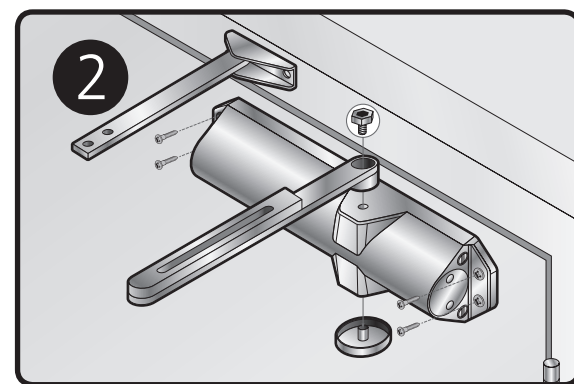
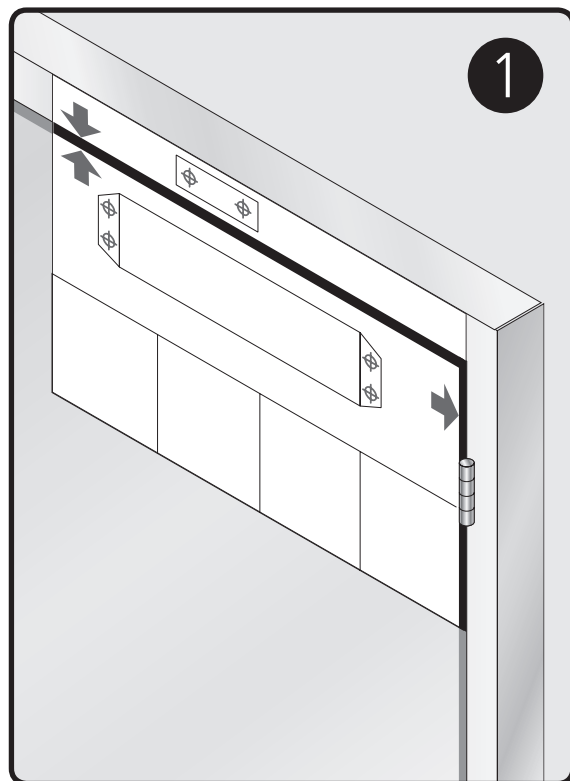
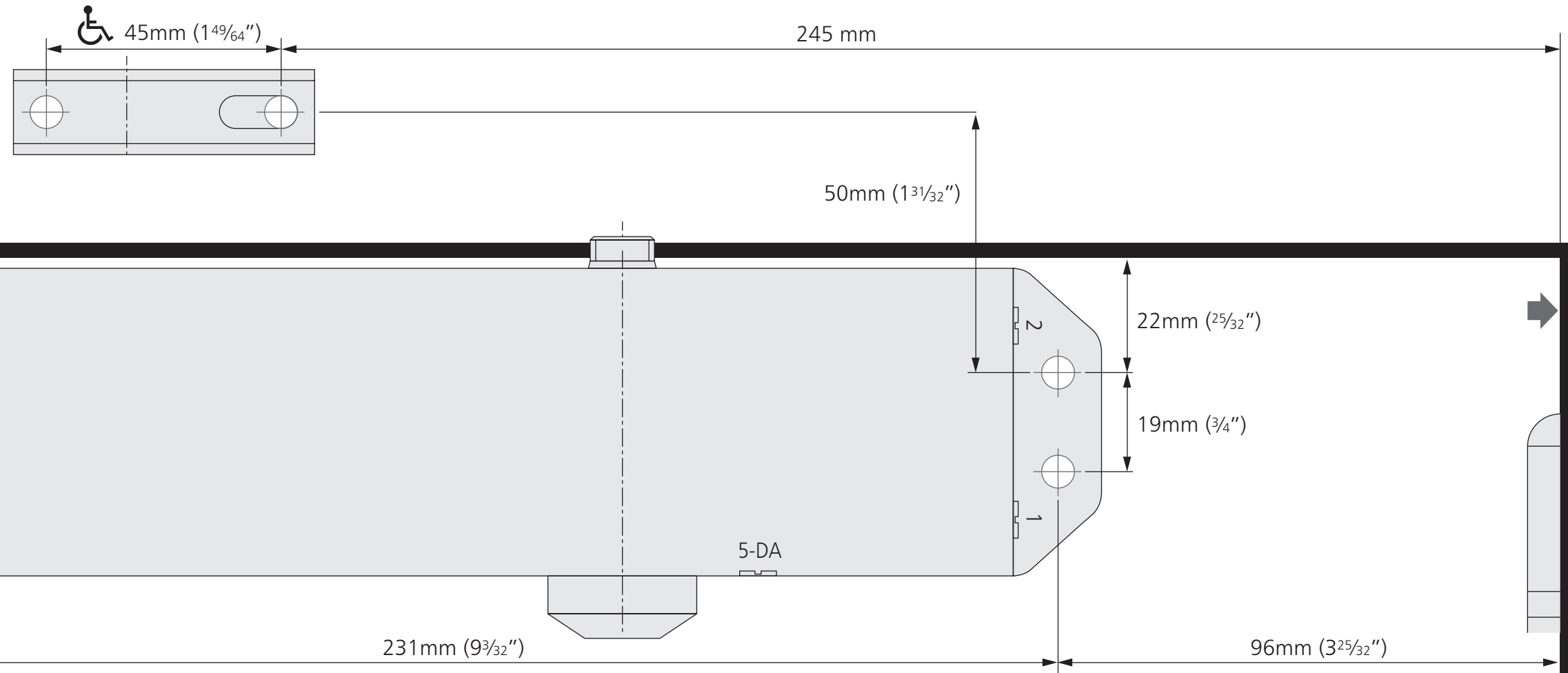
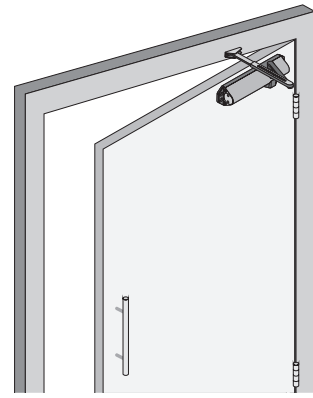


**EN 2-4 Power Adjustment**






No. of turns	EN Size	Max. door width	Max. opening angle	Max weight
-3	2	850m m	180°	45
*0	3	950m m	180°	60
+3	4	1100m m	180°	80

\*FACTORY PRE-SET  
\*\*DA or BC valves Model dependent.

THE PINION BOLT MUST BE TIGHTENED TO 12NM



**EN 2-4 Power Adjustment**

 4 No. of turns	 EN Size	 Max. door width	 Max. opening angle	 Max weight
-3	2	850m m	180°	45
+0	3	950m m	180°	60
+3	4	1100m m	180°	80

\*FACTORY PRE-SET  
\*\*DA or BC valves Model dependent.